



INCADRARE IN ZONA

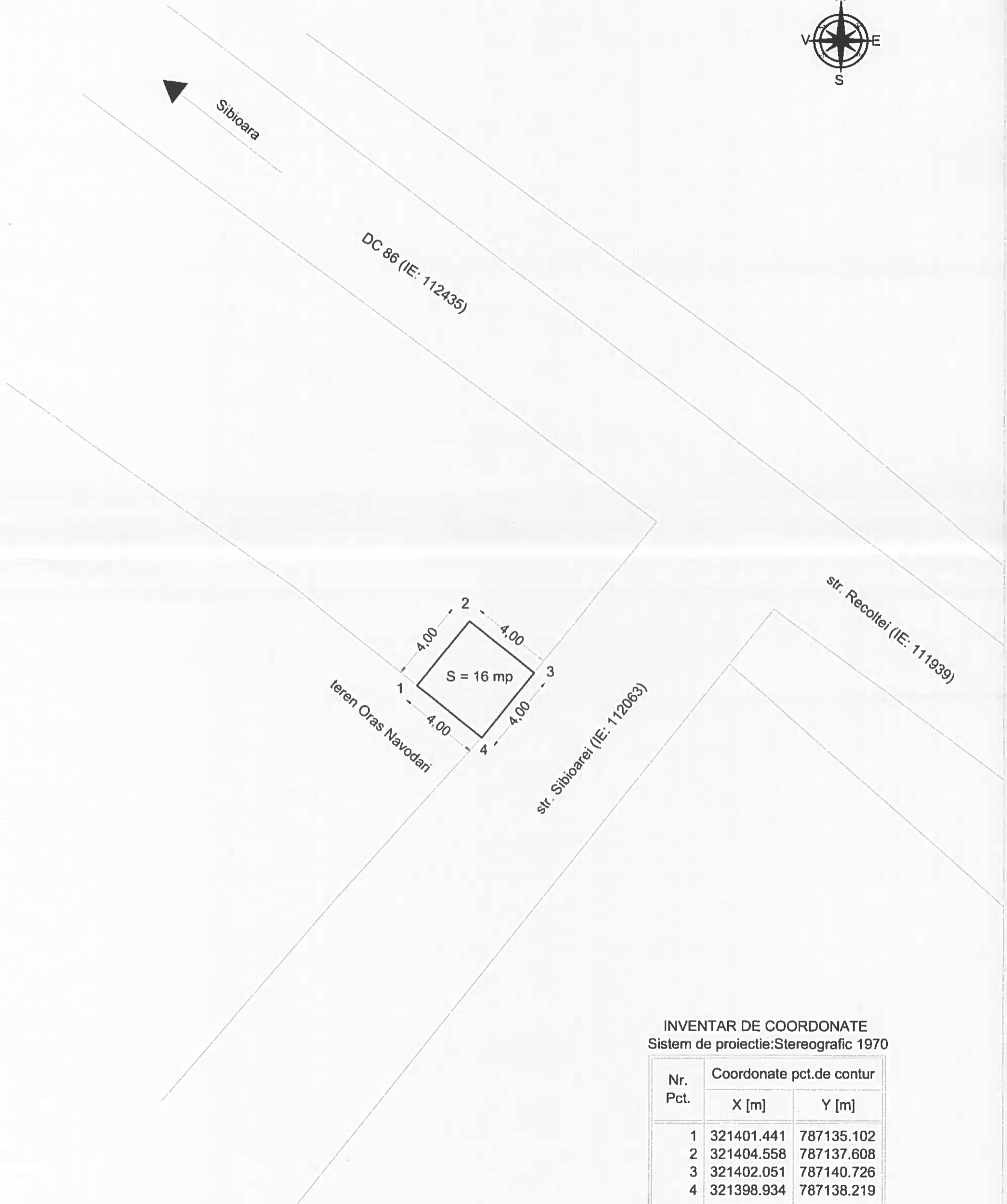
Oras Navodari, B-dul Mamaia Nord, Zona str. Lotus
SCARA 1: 2000



PLAN DE SITUATIE

Oras Navodari, zona str. Recoltei intersectie cu str. Sibioarei

SCARA 1: 200

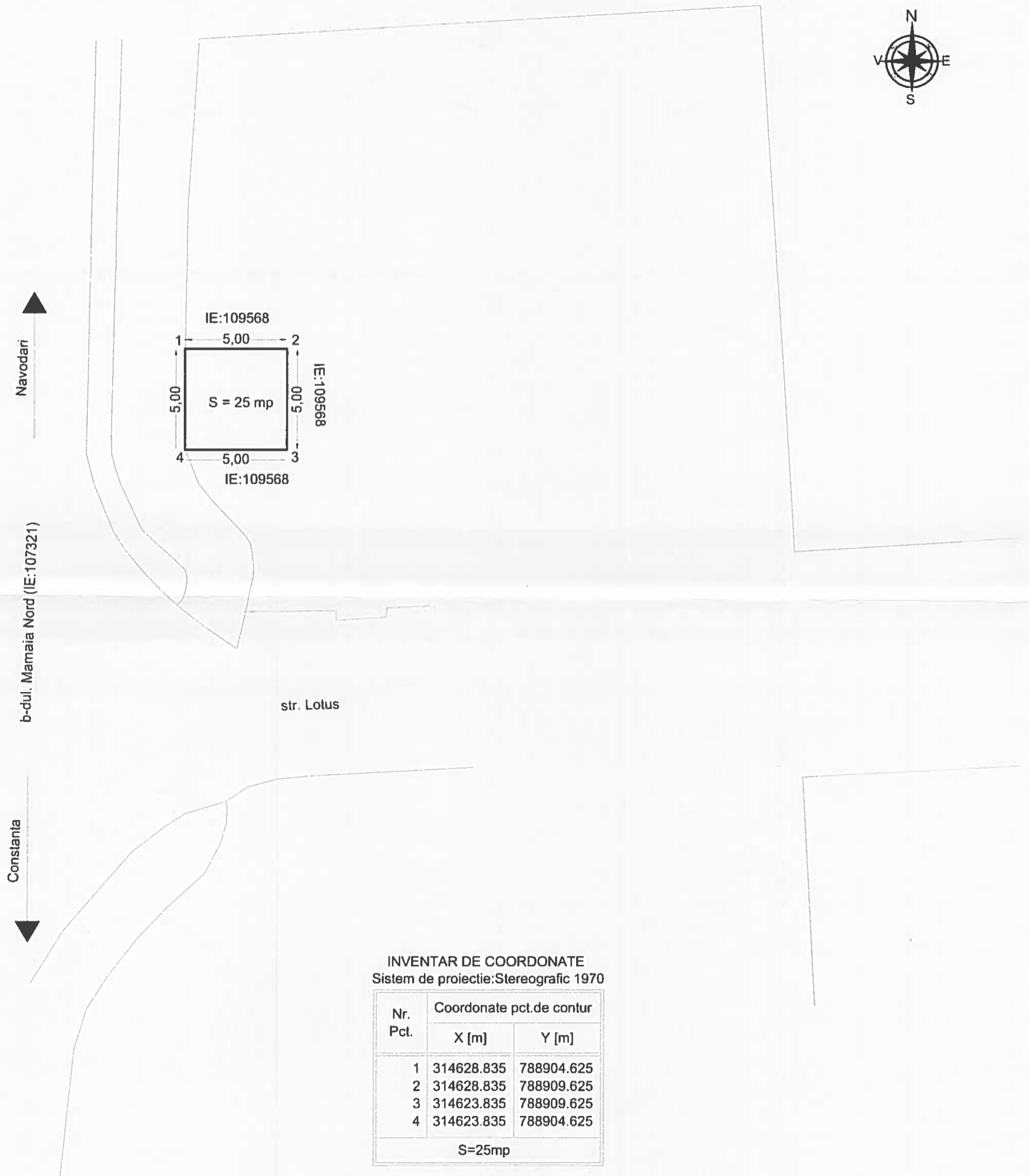


INVENTAR DE COORDONATE
Sistem de proiectie: Stereografic 1970

Nr. Pct.	Coordonate pct.de contur	
	X [m]	Y [m]
1	321401.441	787135.102
2	321404.558	787137.608
3	321402.051	787140.726
4	321398.934	787138.219
S=16mp		

PLAN DE SITUATIE

Oras Navodari, B-dul Mamaia Nord, Zona str. Lotus
SCARA 1: 200



INVENTAR DE COORDONATE

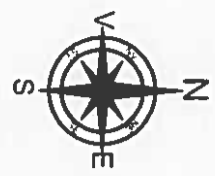
Sistem de proiectie: Stereografic 1970

Nr. Pct.	Coordonate pct.de contur	
	X [m]	Y [m]
1	314628.835	788904.625
2	314628.835	788909.625
3	314623.835	788909.625
4	314623.835	788904.625
S=25mp		

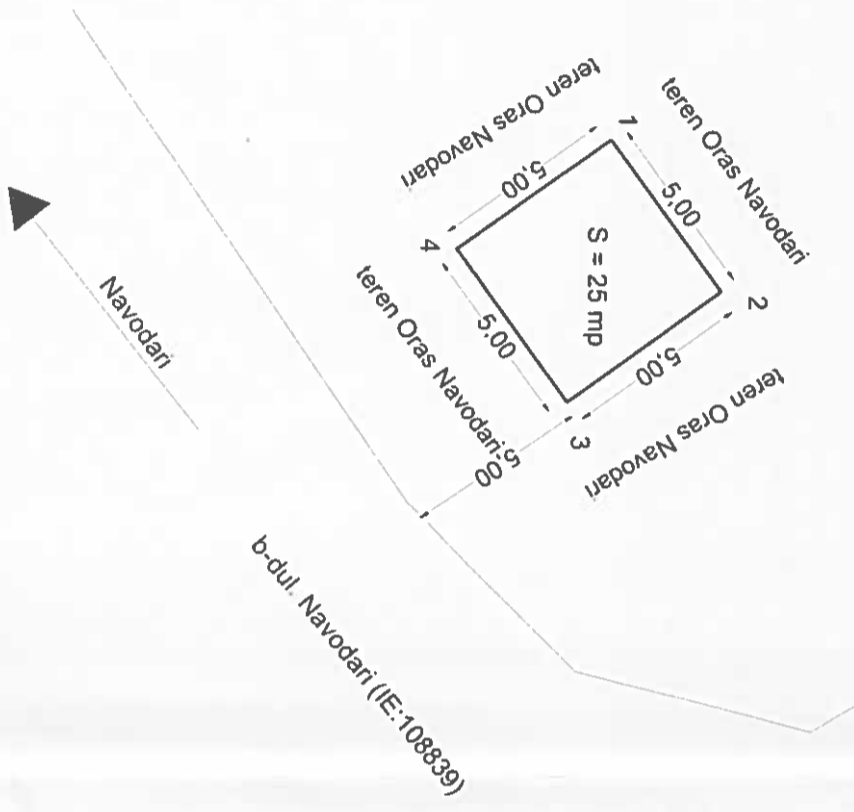
INCADRARE IN ZONA
Oras Navodari, Bd-ul Navodari, zona pod Corbu
SCARA 1 : 2000



PLAN DE SITUATIE
 Oras Navodari, B-dul Navodari, zona pod Corbu
 SCARA 1 : 200



CF
 IE: 115475



Drum

POD CORBU

INVENTAR DE COORDONATE
 Sistem de proiectie: Stereografic: 1970

Nr. Pct.	Coordonate pct. de contur	
	X [m]	Y [m]
1	323434.902	790974.406
2	323437.813	790978.472
3	323433.748	790981.383
4	323430.837	790977.317

S=25mp

INCADRARE IN ZONA
Oras Navodari, zona str. Recoltei Intersectie cu str. Sibioarei
SCARA 1 : 2000



PLAN DE SITUATIE

Oras Navodari, B-dul Navodari, zona str. Taberei
SCARA 1: 200

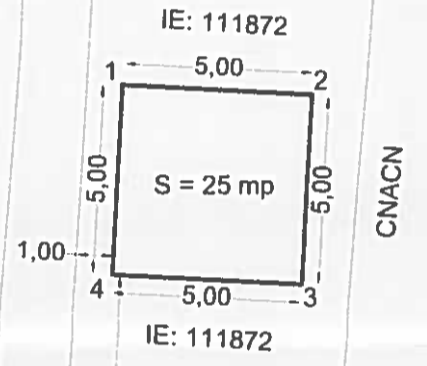


INVENTAR DE COORDONATE
Sistem de proiectie: Stereografic 1970

Nr. Pct.	Coordonate pct.de contur	
	X [m]	Y [m]
1	317341.927	788451.245
2	317341.682	788456.239
3	317336.688	788455.994
4	317336.933	788451.000
S=25mp		



b-dul. Navodari (IE:109724)



str. Taberei
(IE:111105)





INCALZARE IN ZONA
Oras Navodari, B-dul Navodari, zona str. Taberei
SCARA 1: 2000

